

(XIII) Other Material Risks and Response Measures: None.

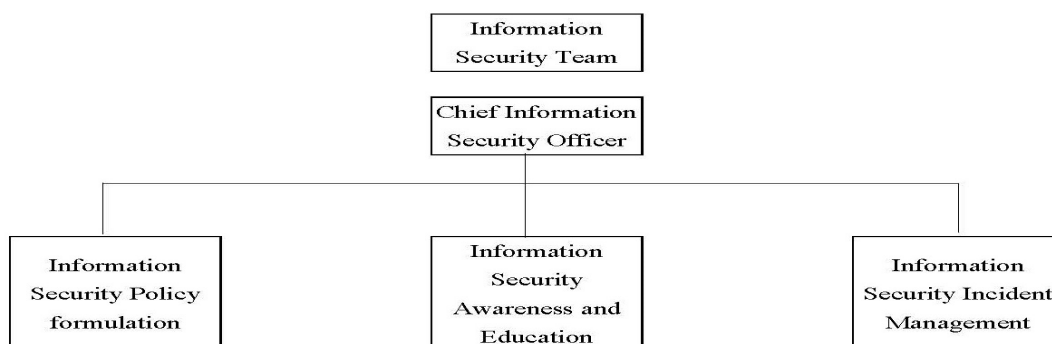
Information security protection building code and actual implementation and response measures:

- **Information Security Risk Management Group**

Through the establishment of information security management system and a dedicated unit (Information Division) including a four-member the information security team, the Group strengthens implementation on improvement of information security protection, detection, promotion and education. By regularly reporting the information management status in the monthly internal operation meetings and quarterly board meetings, the Group assigned dedicated personnel to carry out management and organization to ensure normal operation of information systems. To reduce security incidents and assure information preservation, the Group also regularly upgrades software and hardware to make sure the confidentiality, integrity, availability of the Group's data and the protection of personal information.

The main powers and responsibilities of this group are as follows:

Table here



Information Security Policy Setting Group: Responsible for the formulation of various security policies, and continue to make regulations and information technology adjustments in accordance with the law.

Information Security Promotion Education Group: Responsible for the education and training of the company's information security policy and whether the company's employees have relevant information security

concept tests.

Information Security Event Handling Group: Responsible for handling the company's information security incident and emergency repair during zero-time difference attacks.

- **Information Security Policy**

- (1) **Network connection policy measures:**

- The company's external connection, open host, wireless network services, VPN connection policy, vulnerability detection.

- (2) **Data backup policy measures:**

- The backup mode adopts three modes: local backup, remote backup and offline backup.

- (3) **Data backup verification measures:**

- Local backup, same factory backup in different places, remote backup in different places, offline backup.

- (4) **E-Mail information security policy measures:**

- Set relevant email processing policies, company filtering email policies, information security promotion, and E-Mail information security use rules.

- (5) **Confidentiality device disposal measures:**

- In order to ensure that the data is not leaked when the company stores important data due to failure or replacement of the equipment, this method is specially formulated to provide a basis for handling various information products when selling various information products.

- **Information Security Specific Management Plan, Implementation and Goals**

- (1) **Palo Alto Network Firewall**

- All kinds of abnormal network uses are prevented to safeguard the security and smoothness of the Group's external network and reasonably manage employees' online access, thereby improving the use in line with the Control of Information Security Inspection.

- (2) **Chunghwa Telecom hinet Enterprise Information Services**

Chunghwa Telecom Network Security Service is introduced to prevent more than 99% of outbound cyberattacks to ensure the safety of the company's information environment and the compliance with the Control of Information Security Inspection.

(3) Tahsin ERP Backup System

The Group has established an information management backup system to ensure the security and sustainable development of corporation operation system. Recovery procedures are rehearsed regularly every year to ensure personnel's technical implementation and experience inheritance of personnel as well as the compliance with the Control of System Recovery Plan and Test Program.

(4) ArmorX Email Protection System

Spam management mechanism has been established to block outbound spams and defense against malicious email, prevent and reduce various information security risks and ensure the compliance with the Control of Information Security Inspection.

(5) The Group's Email Backup System

The Group has established an online backup system for the Group's e-mail system, so as to ensure the security of the e-mail system and consistent compliance with e-mail-related regulations, and store historical e-mails for ten years for the sake of inquiry and reference of transaction information. The backup system is in line with the Control of System Recovery Plan and Test Program.

(6) Symantec Anti-virus System

Internal computer anti-virus treatment mechanism and intrusion detection have been established to prevent hacker attacks and ensure the effective access to computer resources and compliance with the Control of Information Security Inspection.

(7) The Group's File Backup Mechanism

The Group carried out on-site backup, remote backup in the same plant, remote backup in different plants, and offline backup. The Group utilized online drives and external hard drives to regularly

back up data, to ensure the access control of data and the security of account/password management. The mechanisms have successfully prevented several ransomware events and rescued the files in a timely and effective manner, thus minimizing the losses and following the Control of System Recovery Plan and Test Program.

(8) Information security education, promotion and implementation:

2023

Education and promotion (video conference)	Hours	Number of people
Basic concepts of the internet and an Introduction to email social engineering	1.5H	161
	1.5H	97

Until the end of March, 2024

Education and promotion (video conference)	Hours	Number of people
Social engineering and cyber camera security	1.5H	167

(9) 2024 Information Security Implementation Objectives:

1. Continuously strengthen the architecture of information security.
2. Implement tracking information security case handling and internal information security report.
3. Raise employees' awareness of information security and arrange more than 1 online video promotion and 2 courses every year for information security education.